

# Graduate Studies at the University of Pittsburgh

Amanda Godley  
Vice Provost for Graduate Studies  
Student Admissions, Aid & Affairs Committee Meeting  
February 22, 2023

# Overview of Graduate Programs

The University of Pittsburgh offers 359 distinct graduate and professional programs, including 62 100% online programs.

Programs by Type (2023)	
PhD programs	82
Professional doctorate programs	24
Research master's programs	43
Professional master's programs	120
Certificate programs	90
<b>Total</b>	<b>359</b>

# Highly Ranked Graduate Programs

- Shanghai Rankings
  - Pitt ranked 82 internationally
  - Nationally, Pitt ranked 36 (18 among public universities)
- University Ranking by Academic Performance
  - Pitt was ranked among the world's elite institutions in 58 of 76 subjects
  - Pitt was ranked in the top 50 in the world in 20 fields
- US News top programs
  - Business, engineering, health sciences, law, education, GSPIA, online nursing and MBA.

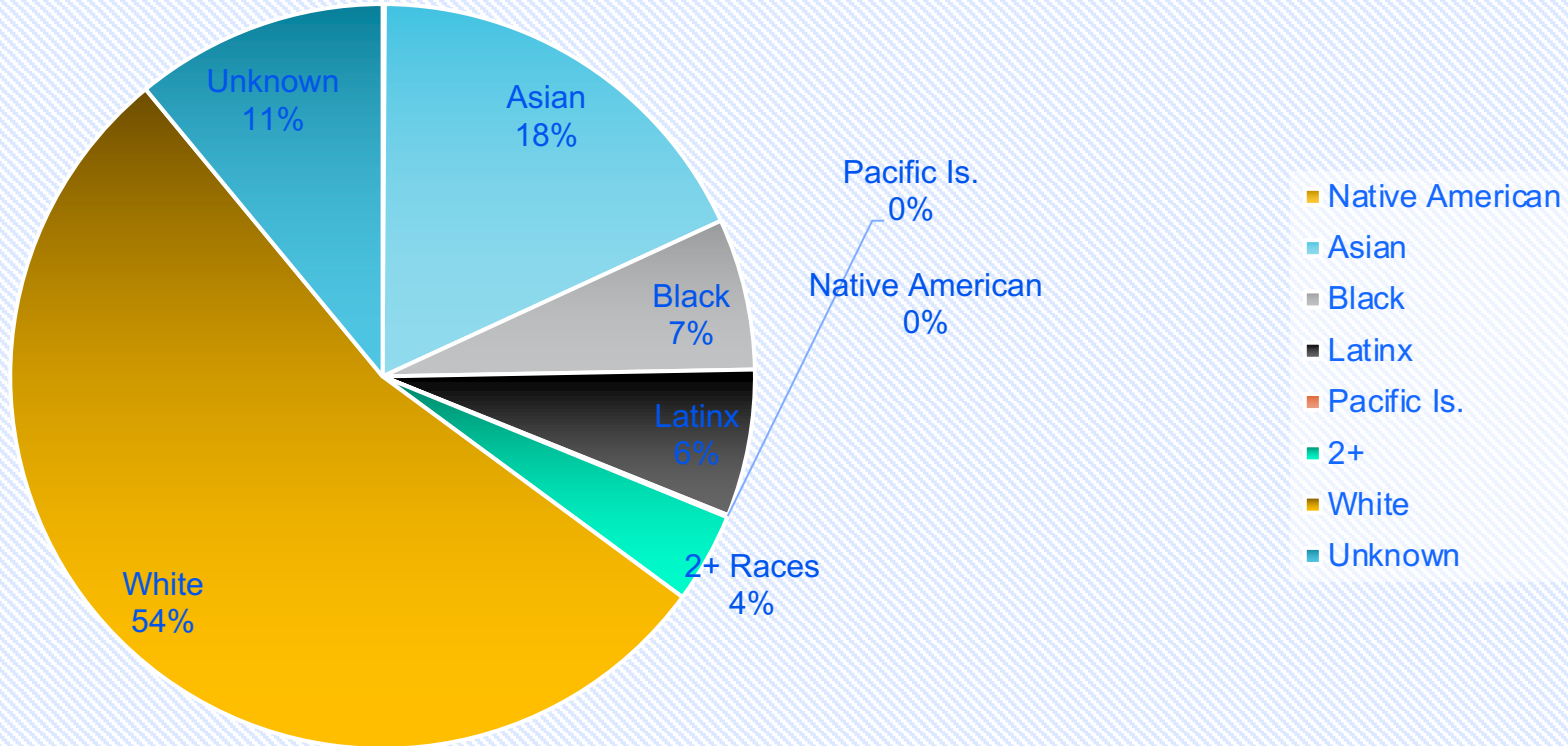


# Fall 2022 Enrollment

Program Type	# Students
Research doctorate	2,691
Professional doctorate	2,376
Research masters	707
Professional masters	3,092
Certificate	369
Non-degree	8
TOTAL	9,243



# Graduate and Professional Enrollment By Race



# National and International Fellowships, Awards and Traineeships

140+ awards

- 26 NSF Graduate Research Fellows
- 8 Fulbright
- 29 NIH T32
- 8 NIH F31
- Ford Foundation, AHA, Gilliam
- 729 total trainees and fellows



Graduate Research Fellowship  
Program

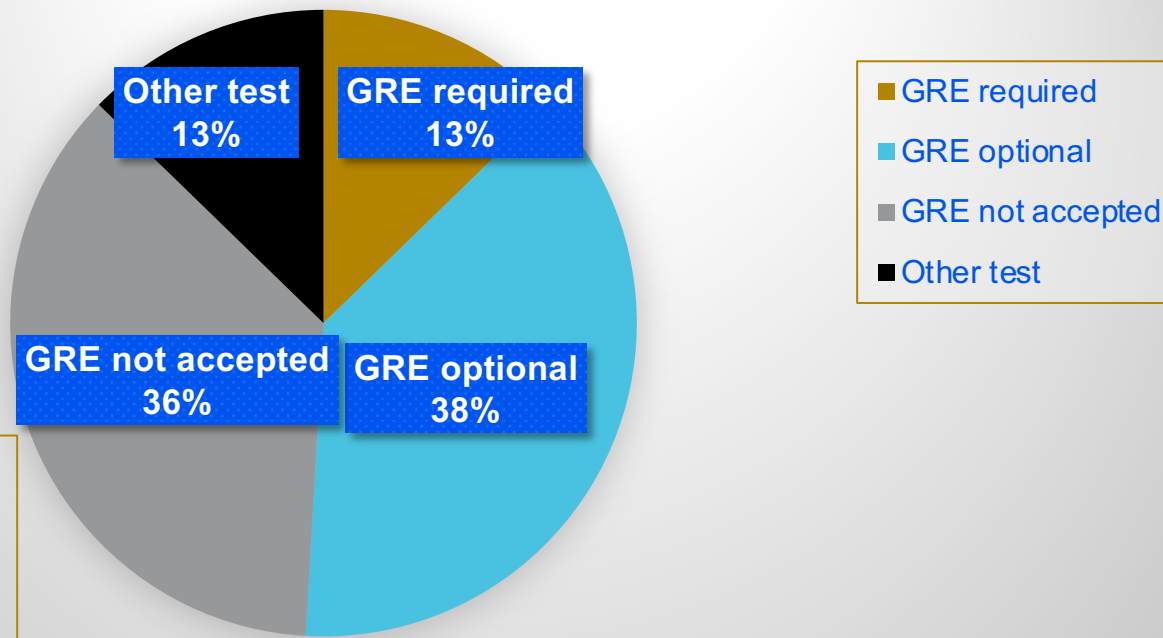


National Institutes of Health  
*Research Training and Career Development*

# Admissions

- Decentralized
- Over 20 different admissions systems used across the university
- New Liaison CAS admissions system and new process will allow us to share current and historical data
  - Applications received
  - Applicant demographics
  - Yield
- Data will be available late spring 2023

# University of Pittsburgh GRE Requirements by Program 2021



## Notes:

- 300+ distinct grad/prof programs total.
- 15 programs that are GRE optional for 2021 will reassess after the pandemic.





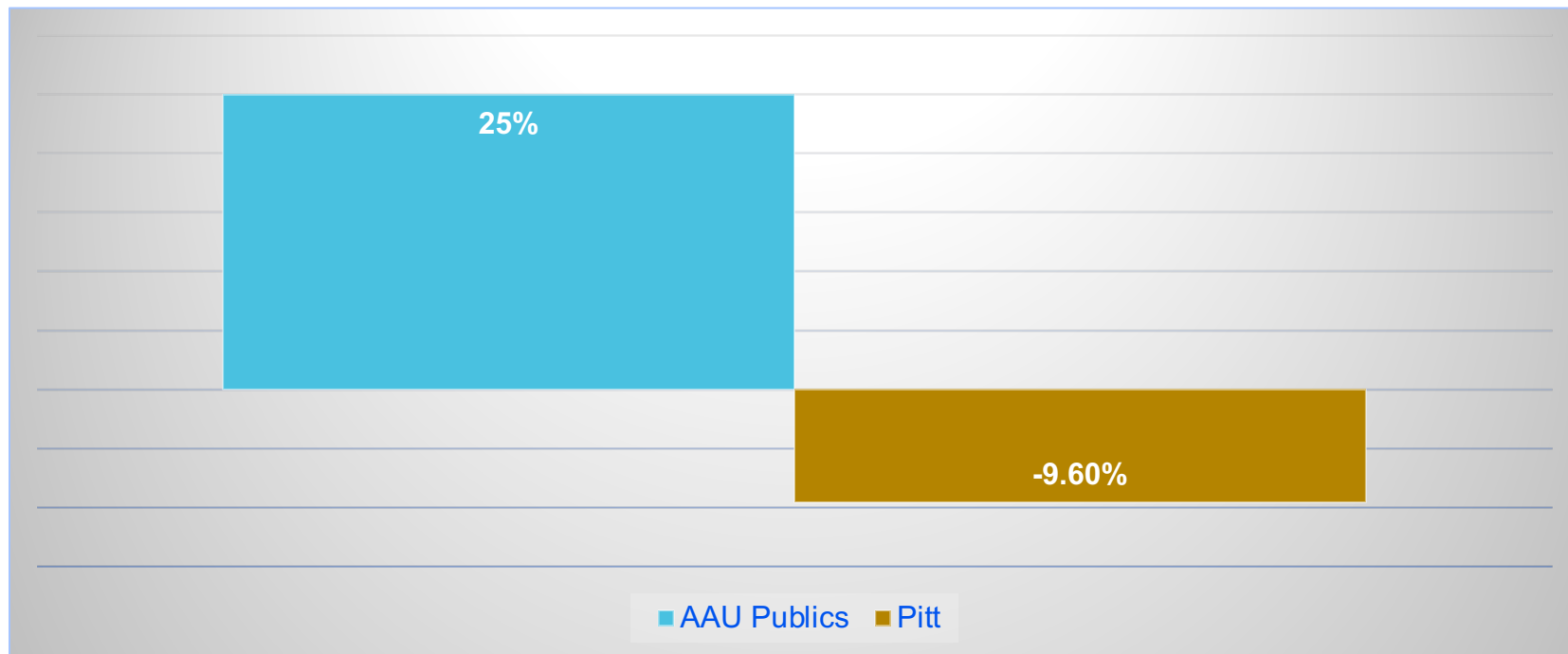
# Financial Aid and Support

- Distributed from the Office of the Provost, OAFA and Schools
- Many students do not complete FAFSA
- Most PhD students have appointments as GSA/GSR/TA/TF, trainees and fellows: full tuition scholarship, health insurance, stipend
- Move to one system/process

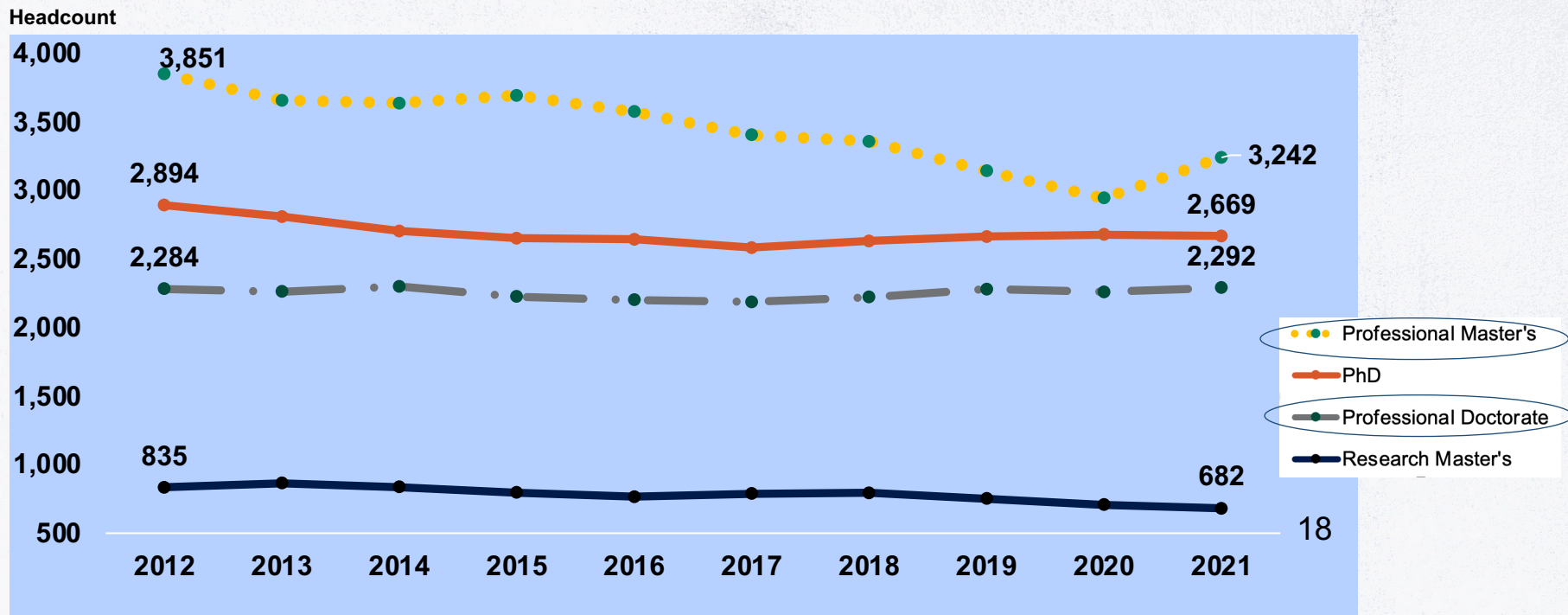
# National Trends in Graduate Education

- Demand for master's and professional programs
- Access and affordability, especially for underrepresented students (first-gen, URM, rural)
  - Online and hybrid graduate program increase; in-person decrease
  - Part-time programs and flexibility
  - “Stackable” certificates and micro-credentials
- Accelerated undergraduate to graduate programs
- Holistic mentoring and advising
- Diverse career options for PhD students
- International: More students from India, fewer from China

# 10 Year Graduate Enrollment Change AAU Public Peers: 2011-2021

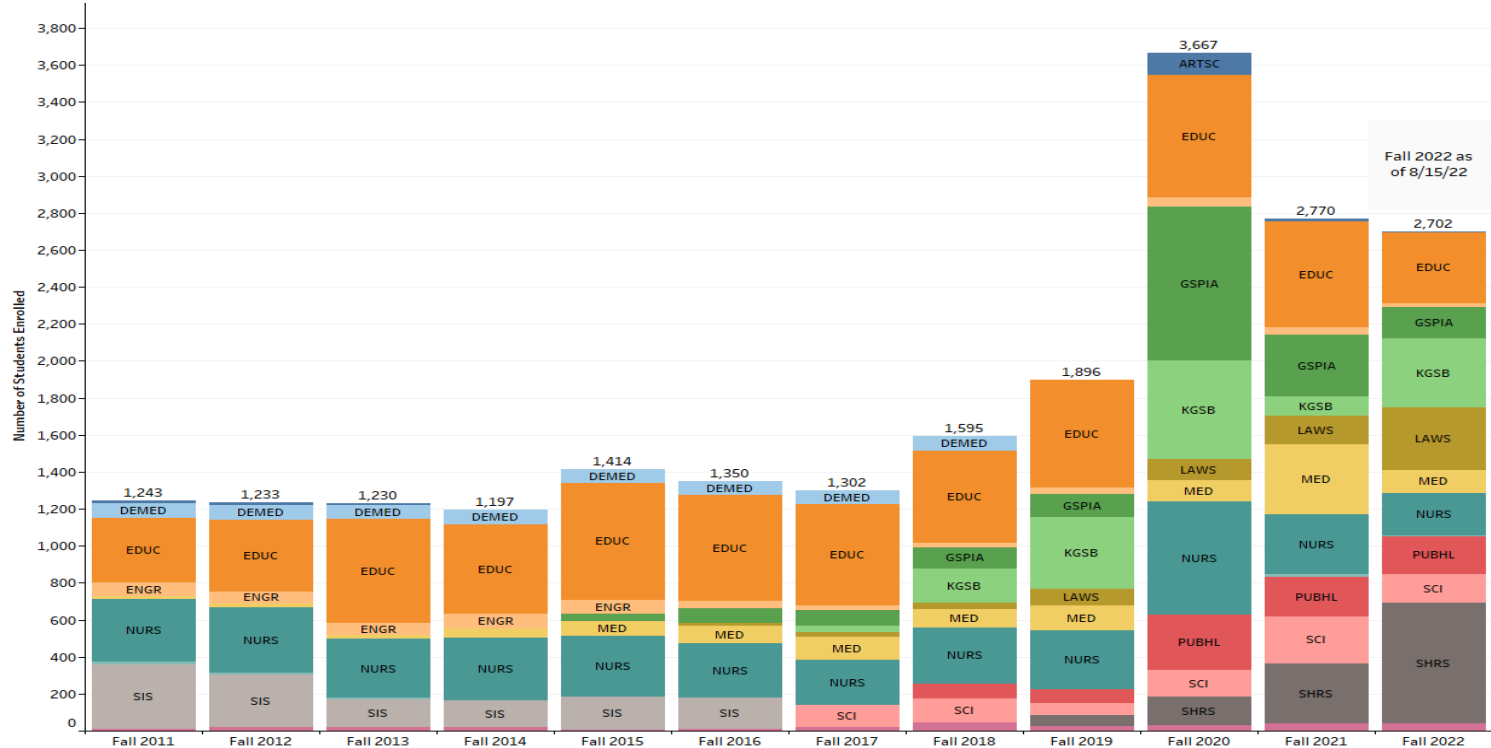


# Enrollment by Program Type 2012-2021



Note: Certificate and non-degree students are excluded.

# Enrollment in Graduate Online Courses



**Note: Only Includes Classes Specifically Approved for Online**



University of  
Pittsburgh

Office of the Provost  
Graduate Studies



# Mission of OTP Graduate Studies

## Mission Statement:

Our mission is to:

- Build and maintain exceptional academic programs in partnership with schools and units through assessing needs; sharing data, best practices and national trends; offering centralized services; and developing clear and efficient policies and processes.
- Support the growth and success of all graduate and professional students throughout their academic experiences and career pathways.
- Advance equity, diversity and inclusion through admissions, financial aid, mentoring, programming and an inclusive and welcoming learning environment.
- Contribute to the strength of the University through continuous improvement in academic climate, student satisfaction and outcomes, and institutional reputation.

# Graduate Studies Strategic Plan

Support continued growth of innovative and world-renown graduate and professional programs and research.

Increase representation and success of underrepresented students.

Provide holistic support for students' wellbeing and success.

Increase enrollment in master's and professional programs.

Prepare students to secure meaningful employment and contribute to communities beyond the university.

Provide graduate and professional educational opportunities that serve our city, region and state.

Provide infrastructure to support key functions of graduate administration.



# OTP – Graduate Studies Team



**Tamara Clifton »**

Administrative Assistant |  
#scheduling #office hours  
412-383-2485  
tlc121@pitt.edu



**Meghan Culpepper »**

Academic Affairs Coordinator |  
#fellowships #postdocs  
#undergrad research  
412-648-4002  
msc80@pitt.edu



**Treviene Harris »**

Graduate Career and  
Professional Development  
Manager | #professional  
development #career exploration  
412-383-0692  
trh42@pitt.edu



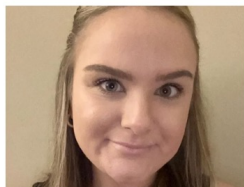
**Stephanie Hoogendoorn »**

Director of Academic Affairs |  
#ombuds #appointments  
#wellness #financial aid  
412-383-5624  
hoogen@pitt.edu



**Shannon Mischler »**

Academic Program Development  
Manager | #recruiting #Pitt2Pitt  
#online education  
412-383-2692  
sjmischler@pitt.edu



**Lily Morar »**

Events and Resources  
Coordinator  
412-648-5672  
lam446@pitt.edu



**Alydia Thomas »**

Diversity, Engagement and  
Inclusion Manager | #diversity  
#PanAf #mentoring  
412-383-9658  
ART138@pitt.edu



**Jennifer Walker »**

Associate Director of Academic  
Affairs | #GPSG #grievances  
#admissions  
412-624-4213  
jlwst88@pitt.edu



# Recruitment and Admissions Initiatives

- Holistic admissions training
- Online resources: DegreeFinder, Graduate Studies website
- Pitt2Pitt scholarships for Pitt seniors and alumni
- New Graduate Studies staff (Shannon Mischler) and two new staff for graduate program marketing (UCM)
- Centralization of recruitment resources (Liaison, Salesforce, videos)
- Increased digital marketing and market analysis resources
- Increased support for developing innovative and online programs (VP)
- International student recruitment
- GPARC community

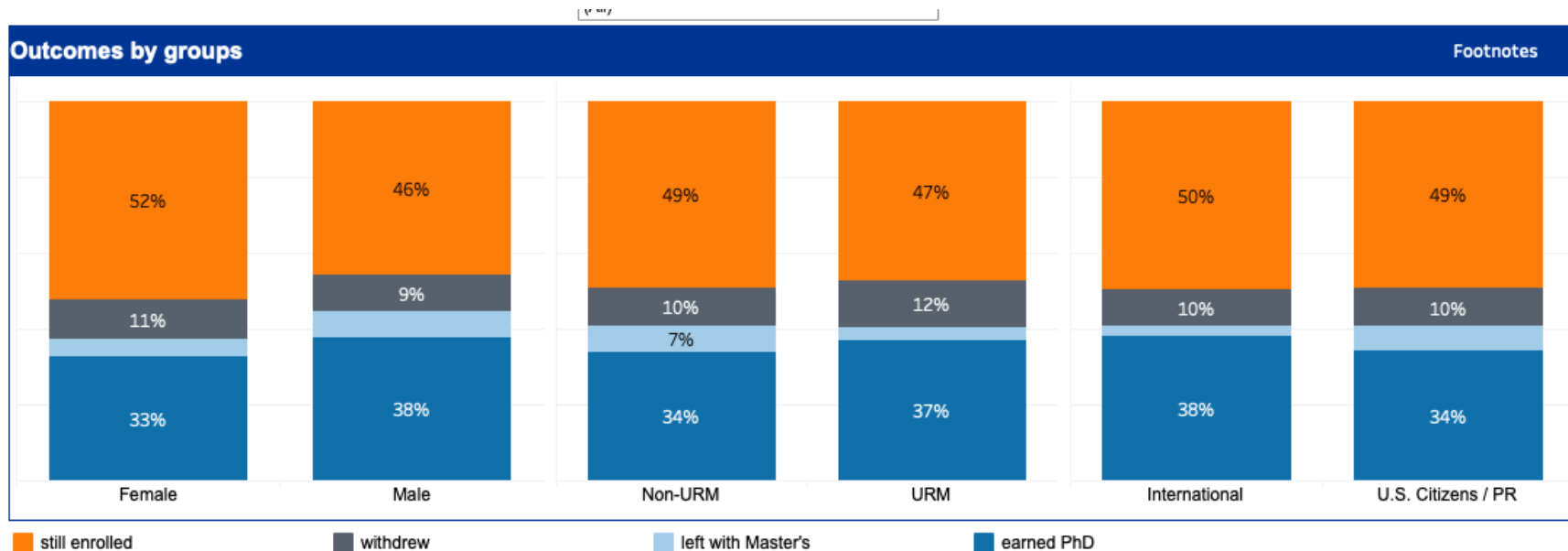
# Diversity, Inclusion, Equity and Belonging Initiatives

- Holistic approach to graduate and professional student success
- New graduate studies DEI staff: Dr. Alydia Thomas
- Provost's Development Fund improvements and Irvis Fellowship Program expansion
- Mentoring and mentor training and guidance
- Graduate Global Ties (500 students)
- Students of Color dinners with CMU and Duquesne, first gen book club
- Ombudspeople, counseling and other resources
- Faculty cluster hires in Latinx Studies and Race and Social Determinants of Equity, Health and Well-Being (63 new faculty)



# Coalition of Next Gen Life Sciences

<https://somgrad.pitt.edu/graduate-data-dashboard>



University of  
Pittsburgh

Office of the Provost  
Graduate Studies

# Professional and Career Initiatives

New staff: Treviene Harris

## Pitt PhD Career Outcomes 2011-2021

- 57% hold jobs in academia
  - 20% administrative (not faculty)
- 42% hold non-academic jobs
  - 80% in for-profit sector: Google, Amazon, Intel
  - 10% in non-profit sector: Broad Institute, ECRI Institute
  - 10% in government sectors: FDA, HHS, NIH



# Professional Competencies Program for Graduate Students



# Supporting Graduate Studies

- Help us spread the word:
  - Our excellent graduate and professional programs at Pitt
  - Pitt2Pitt scholarships
  - Importance of mentoring and advising
  - New professional development opportunities
  - New supports for underrepresented students
- Support holistic admissions
- Encourage students to complete FAFSA
- Consider creating new accelerated and online programs
- Share ideas and concerns with us



# Discussion and Questions

